

Providence Institute for a Healthier Community

2024 Impact Report

Providence Institute for a Healthier Community (PIHC) is part of Providence Swedish North Puget Sound Service Area. PIHC focuses on the health and well-being of Snohomish County.



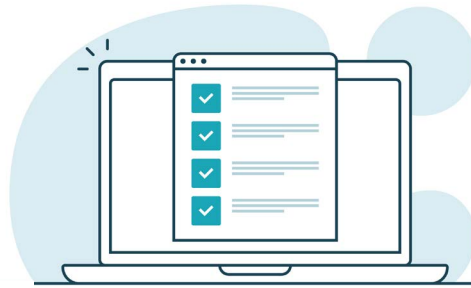
Providence Institute for a Healthier Community



Health & Well-being Monitor

The Health & Well-Being Monitor is a longitudinal survey that measures the health and wellness of Snohomish County residents. Smaller community groups like churches, neighborhoods, or regions within the county can conduct their own survey—a My Community Health and Well Being Monitor. Communities can compare their results with those of the county as a whole—helping to identify key areas for improvement.

Learn More:



2024 SURVEY RESULTS

Our 2024 annual health and well-being survey representing the 800,000+ residents in Snohomish County revealed that

- ⬆️ **Snohomish County's overall well-being score trended up for the first time since 2021.**
- ⬆️ **Motivation to change also increased slightly.**

The 2024 results are now available [here](#).

2024 TOP IMPACTS

Top impacts in 2024 on overall well-being included: Physical health, Emotional well-being, A sense of purpose and meaning, and Financial security. [Read more](#) and find links to local resources to support these top impacts on well-being.

- 1 **Physical health,**
- 2 **Emotional well-being**
- 3 **Sense of Purpose and Meaning**
- 4 **Financial security**



Local Community Organizations are using and tailoring the monitor to assess their own unique community needs and measure program improvements along with impacts on well-being. [Learn more](#) about the My Community Health and Well-being Monitor.

2024 STATS:

Health & Well-Being Monitor

Assessment addresses all six dimensions of health.
Empowers our diverse communities to identify and address gaps in well-being.



1

Annual HWBM
Snohomish County survey
representing

845,000

residents with **686 responses**



3

Community HWBM surveys in
WA & AK with **904 responses**



1,590

Total respondents
Snohomish County and
Community Surveys

Education & Promotion

- 1 Newsletter with **8,669** opens and **4,447** clicks
- Facebook Post reaching **179** people with **48** engagements
- **5** Blog Posts with **228** views
- **1** Herald article reaching **350,000**
- EOA State of Well-being presented to **332** participants
- **1** ad in EOA program reaching **332**
- **106** people downloaded the Health and Well-Being Monitor Report
- **579** total HWBM website pageviews



Health Education Promotion (HEP)

Our education/outreach team draws from a variety of service lines across Providence Regional Medical Center Everett, each with their specific focus and area of interest. Collectively, we promote awareness of key priority public health, health education, and prevention messages for our diverse communities. Team members are advocates and trusted resources for science-based health information, messages and campaigns on a variety of topics.

Learn More:



INCREASED REACH

Compared to 2023, HEP expanded reach and engagement in 2024 events by

- ⬆️ 63% increase in reach
- ⬆️ 48% increase in engagement

The HEP team attended 20 diverse health and well-being local events in Snohomish County. [Learn more.](#)



240 HOURS
of Fieldwork Student Experiences

Service learning partnership with UW-Bothell Health Studies Fieldwork students, hosting 1 student per quarter for 40 hours of fieldwork experience in health education promotion outreach, with over 240 hours of fieldwork student experiences.

INTERNAL EVENTS

In 2024, HEP expanded internal service line events and partnerships, participating in the following events:

- **PRMCE Spiritual care annual education workshop**
- **PRMCE Cancer Partnership/Diagnostic Imaging Comprehensive Breast Center—collaborated for Cancer Screening Event**
- **PRMCE Sepsis—collaborated for World Sepsis Day**
- **Swedish Edmonds Stroke—collaborated for Edmonds Expo**
- **Swedish Cancer Center—collaborated for HEP events, Aquasox, City of Snohomish Resource Fair, and Embracing Diversity Event**

2024 STATS:

Health Education Promotion

Promoting awareness of key priority public health, health education, and prevention messages for our diverse communities.



Attended **20 community health and well-being events** reaching

20,012
engaging **3,862.**



392

Visits to the
HEP webpage.



4 Fieldwork student completed

240

hours of community outreach
work with UW Bothell.



20

event summary blog posts
with **1,204 views**

Service Line Collaborations

- Diagnostic Imaging Breast Center
- Spiritual Care



Hosted **10 HEP team meetings**
engaging an average of

19

caregivers across
multiple service lines.



PIHC LiveWellLocal.org

PIHC LiveWellLocal.org is a crowd-sourced, hyper-local search tool for health and well-being resources in Snohomish County.

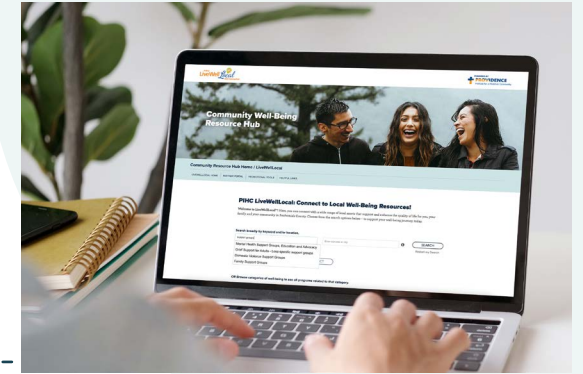
LiveWellLocal.org makes it easy for residents to find resources that support health and healing. LiveWellLocal.org helps make visible the unique strengths, assets and skills of individual organizations and of the collective community.

Learn More:



RESOURCE LISTINGS

Our resource hub www.livewelllocal.org hosts over **2,400 local resources** for Snohomish County, with **938 different organizations** highlighted and represented on the hub. [Visit the hub.](#)



1,098

Partners in the Portal

+55

New in 2024

741

Actively update listings

ACTIVE PARTNERS

55 new partners joined the partner portal in 2024, totaling 1,098 partner portal members. Of the 1,098, 740 are active, meaning they log in and or update their organizations programs listings within the last 90 days. [Join the portal.](#)



Organic traffic to LiveWellLocal.org increased by over **100%** in 2024 (36.8%), compared to 2023 (17.8%). Visit LiveWellLocal.org.



4 newsletters were launched in 2024 highlighting **1,548** featured resources from LiveWellLocal.org. View newsletters [here](#).

2024 STATS:

LiveWellLocal.org

LiveWellLocal.org is a crowd-sourced, hyper-local search tool for health and well-being resources in Snohomish County. LiveWellLocal.org makes it easy for residents to find resources that support health and healing.



2,435

current resource listings on livewelllocal.org.



741

active partners on the Partner Portal, **55 new portal members** joined in 2024.



572

Outreach Kit pageviews helping community partners to promote LiveWellLocal.org.



Top Clicks

Top 3 Categories Clicked:

- 1 SECURITY AND BASIC NEEDS**
16k clicked on Security and Basic Needs
- 2 PHYSICAL HEALTH**
6.6k clicked on biking and hiking
- 3 WORK, LEARNING AND GROWTH**
4.1k clicked on Work, Learning and Growth general public resources

Facebook ad campaigns reached

680,936

people. Top three ad campaigns clicked:

- Recreation
- Mental Health
- Basic Needs - Food



LiveWellLocal.org received

34,206

website visits with **8,660 program views** and **8,028 outbound website clicks**.



4

LiveWellLocal.org newsletters sent featuring **1,548 local resources** with **6,873 opens** and **3,629 clicks**.

Top 3 Outbound Links:

- 1 Compass Health - Emergency Motel Voucher Program**
- 2 Arlington Recycle Warehouse**
- 3 Purrfect Pals free spay and neuter**



Edge of Amazing

Edge of Amazing is an annual conference that brings people together to address the most pressing health needs and public health issues impacting the health and well-being of our community. EOA priorities align with current community needs revealed in the annual Health and Well-being Monitor and Providence Regional Medical Center Everett's current Community Health Improvement Plan.

Learn More:



2024 EOA: CULTIVATING CURIOSITY

Highlighting stories and strengths of community, and fostering partnerships to impact health equity and a community culture of well-being.

- With over **330 registrants** and attendees from **123 different community partner organizations**
- Partnered with over **60 local and regional organizations on content**

For contact information on our partner organizations in the Resource Share Area, visit our online program [here](#).



ATTENDEE COMMENTS:

“ I loved the diversity of the speakers and topics that were presented at this year’s conference. It was a breath of fresh air to see healthcare and community well-being viewed from different perspectives, and going beyond the medical aspect of what it means to be healthy.”

“ My biggest takeaway didn’t come from any particular session, but from the experience of being in a created community of like-minded individuals who value the type of conversations and focus on topics that we typically don’t get an opportunity to explore in such a setting.”

“ It’s very unifying and supportive of the community work we do. It’s really reassuring to see so many that care and commit to making things better for others and often less fortunate. It helped restore my faith in humanity.”

“ It’s invaluable for networking and finding out what’s happening in the community healthwise. There are also great opportunities to learn about available resources that might not be widely advertised.”

“ So many phenomenal people doing good work, creating community.”

Edge Of Amazing Conference

Connecting, educating and inspiring health and well-being advocates to enhance whole-person health and health equity.



332

Registrants/Attendees from **123** community partner organizations. **14** full scholarships were awarded.



21

Local or national speakers representing **18 local organizations.**



15

Total sessions including:

- YMCA Chair Yoga & on-stage Movement
- 2024 Snohomish County State of Well-being Results
- Practicing Mindfulness & Presence
- Curiosity as a Practice
- Stories Behind the Aging Unhoused
- Strengths in the Community
- Secret World of your Microbiome
- Community Resource Share Area
- Mind, Body & Spirit Room



6

Discussion Lightning Rounds. Topics included:

- Building Healthy Communities through Financial Empowerment
- Meeting the Emotional and Mental Health Needs of Our Community
- Local Innovation & Equity in Access to Healthcare & Basic Needs
- Health Literacy, Access to Health Information & Trusted Resources
- Opioid Crisis – Myth Versus Reality
- Foundational Impacts of Housing on Health & Well-being.



Promotion

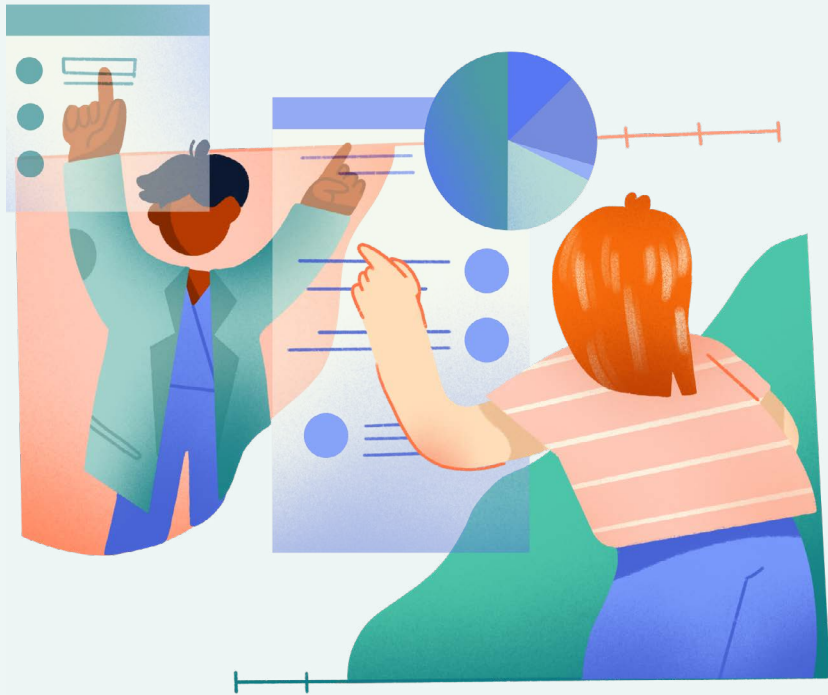
Email campaigns reached over **773** targeted past participants. Promotional emails via Mailchimp opened over **11K** times, with **5.5K** Edge of Amazing website views **(up 10% from 2023).**



Partnered with

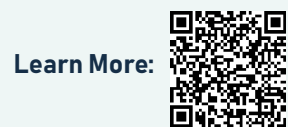
61

Local and regional organizations through the Resource Share Area, including **13 sponsors.**



PIHC Partnerships

Partnerships are at the heart of PIHC's work. By focusing on partnerships, we work to get access, resources, power and the locus of control as close to to the community as possible. By connecting the community to resources like PIHC LiveWellLocal.org, health education programs, Edge of Amazing, and the Health and Well-being Monitor, we're providing programs that can be tailored, controlled and owned by community to use as their own.



EQUITY PARTNERSHIP

Over 15 local equity community partners met monthly to network and collaborate on access to vaccine/resource events, access to job training/education, and homeownership opportunities. Learn more about [partnerships](#).

COLLABORATION

Collaborated with the PRMCE Breast Center and Cancer Partnership where over **88 community members** received free cancer screening, learned about cancer prevention, and received resources and information from community partners.



20 health and well-being community leaders and **multiple focus groups** by diverse partner organizations who serve Snohomish County helped inform Providence Swedish North Puget Sound 3 year Community Health Needs Assessment (CHNA) for PRMCE and Swedish Edmonds. See the full CHNA report [here](#).

Partnerships

Partnerships are at the heart of PIHC's work. By focusing on partnerships, we work to get access, resources, power and the locus of control as close to to the community as possible.



Staff attended

41

external partner meetings and events.



External partner meetings and events reached approximately

976

individuals.



Staff attended

44

internal partner meetings and events reaching **185 people.**



134

Facebook partner event shares with **1,447 engagements.**

Connect with us.

 PIHC@Providence.org

 [PIHCSnohomish](https://www.facebook.com/PIHCSnohomish)



Providence Institute for a Healthier Community

916 Pacific Avenue, S1-016

Everett, WA 98201

pihcsnohomish.org